

# 1414 N4 PHSS Series 304 Stainless Steel JIC Enclosures - NEMA 4X Continuous Hinge, Clamped Cover



**Inner  
Panel  
Included**



**Corrosion Resistant Enclosures**  
Junction Boxes/JIC Enclosures

## Application

- Designed for use as instrument enclosures, electric, hydraulic or pneumatic control housings, electrical junction boxes or terminal wiring enclosures.
- Provides protection where equipment may be hosed down or otherwise be very wet, or in specific applications where corrosion may be a problem.

## Standards

- UL 508 Type 3R, 4, 4X, and 12
- CSA Type 3R, 4, 4X, and 12
- **Complies with**
  - NEMA Type 3R, 4, 4X, 12 and 13
  - JIC EGP-1-1967
  - IEC 529, IP66

## Construction

- Formed from 14 gauge Type 304 stainless steel without knockouts, cutouts or holes.
- Smooth, continuously welded seams.
- Welded brackets provide for enclosure mounting.
- Continuous stainless steel hinged cover is secured with stainless steel clamps and screws.
- Oil resistant gaskets are permanently secured.
- All models larger than 4" x 4" include a removable 14 gauge inner panel.
- Weldnuts are provided for mounting inner panels.
- A bonding stud is provided on the door and a grounding stud is provided in the enclosure.

## Finish

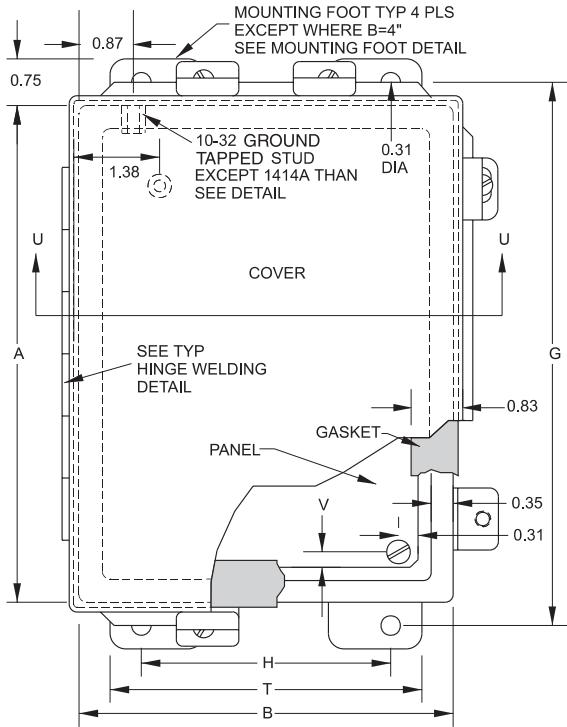
- Cover and enclosure are natural stainless steel with a smooth brushed finish.
- Removable inner panel is finished in white powder coating.

## Accessories

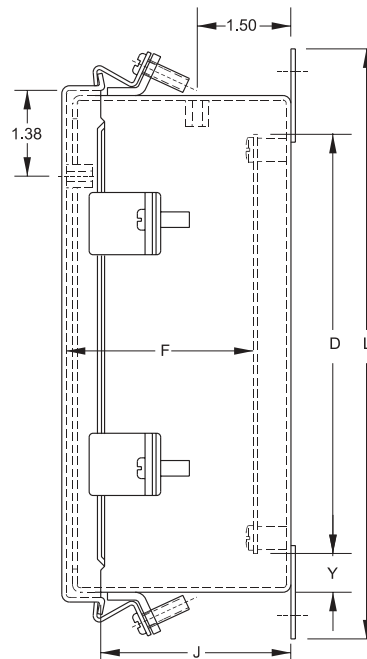
- Additional inner panels...see page **384**
- Breather kits...see page **374**
- Door clamping hardware...see page **378**
- Filter fans...see page **360-367**
- Heaters...see page **369-71**
- Louvered ventilating plates...see page **396**
- Terminal kit assemblies...see page **386**
- Thermostats...see page **374**
- Window kits...see page **391**

# 1414 N4 PHSS Series 304 Stainless Steel JIC Enclosures - NEMA 4X

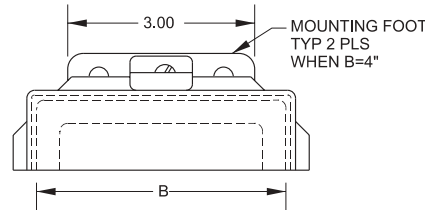
## Continuous Hinge, Clamped Cover



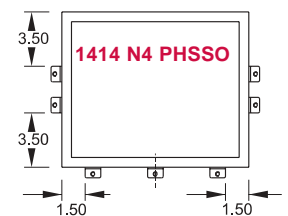
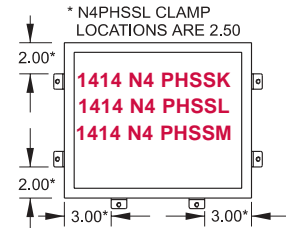
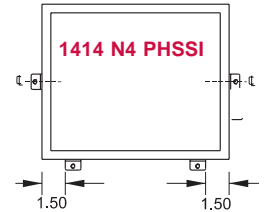
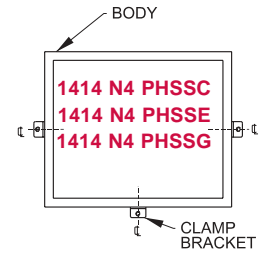
**Front View**



**Side View**



**Mounting Detail When B=4**



**Corrosion Resistant Enclosures**  
Junction Boxes/JIC Enclosures

Part No.	Part No. Without Inner Panel	Mounting Centers										Cover Dimensions				Ship Wt. lbs.		
		A	B	C	D	E	F	G	H	J	L	T	V	Y	With Panel	Out		
1414N4PHSSC4	1414N4PHSSC4LP	6	4	4.0	4.88	2.88	3.50	6.75	2	3.6	7.5	6.31	4.31	3	0.31	0.56	5	4
1414N4PH SSE	1414N4PH SSELP	6	6	4.0	4.88	4.88	3.50	6.75	4	3.6	7.5	6.31	6.31	5	0.31	0.56	6	5
1414N4PHSSG	1414N4PHSSGLP	8	6	3.5	6.75	4.88	3.00	8.75	4	3.1	9.5	8.31	6.31	5	0.25	0.63	6	5
1414N4PHSSG4	1414N4PHSSG4LP	8	6	4.0	6.75	4.88	3.50	8.75	4	3.6	9.50	8.31	6.31	5	.25	.63	8	7
1414N4PHSSI	1414N4PHSSILP	10	8	4.0	8.75	6.88	3.50	10.75	6	3.6	11.5	10.31	8.31	7	0.25	0.63	10	9
1414N4PHSSK	1414N4PHSSKLP	12	10	5.0	10.75	8.88	4.50	12.75	8	4.6	13.5	12.31	10.31	9	0.25	0.63	15	13
1414N4PHSSL6	1414N4PHSSL6LP	12	12	6.0	10.75	10.88	5.50	12.75	10	5.6	13.5	12.36	12.31	11	0.25	0.63	20	18
1414N4PHSSM6	1414N4PHSSM6LP	14	12	6.0	12.75	10.88	5.50	14.75	10	5.6	15.5	14.31	12.31	11	0.25	0.63	21	19
1414N4PHSSO6	1414N4PHSSO6LP	16	14	6.0	14.75	12.88	5.50	16.75	12	5.6	17.5	16.31	14.31	13	0.25	0.63	26	23
1414N4PHSSM8	1414N4PHSSM8LP	14	12	8.0	12.75	10.88	7.50	14.75	10	7.6	15.5	14.31	12.31	11	0.25	0.63	22	20
1414N4PHSSO10	1414N4PHSSO10LP	16	14	10.0	14.75	12.88	9.50	16.75	12	9.6	17.5	16.31	14.31	13	0.25	0.63	28	25